

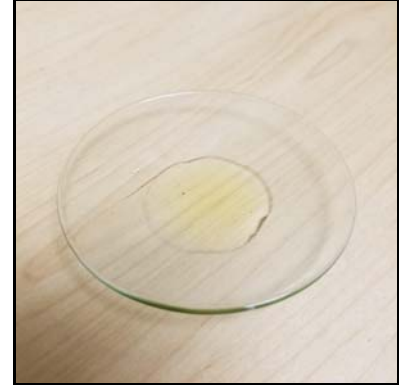
Certificate of Analysis

Client Name: Cultivated CBD	Matrix: Oil
Client Address: 22 N 5th St., Minneapolis, MN 55403	Date Received: 11/15/2019 2:10:00PM
Sample ID: 500 mg Tincture (A)	Lab Sample ID: 1904897-01
Lot/Batch #:	Date of Report: 11/22/2019 5:11:09PM

Analysis	Requested (Yes/No)
Cannabinoid Profile	Yes
Terpene Profile	No
Aflatoxins	No
Heavy Metals	No
Residual Solvents	No
Microbial Testing	No
Pesticides	No



Sample, packaged



Sample, actual

Cannabinoid Profile 1904897-01 500 mg Tincture (A)

Analyte	Result	RL	Units	Analysis Method	Date Analyzed	Notes
Total CBD	2.04	0.202	% by Weight	HPLC	11/20/19 11:00 pm	
Total THC	0.0297	0.00375	% by Weight	HPLC	11/20/19 11:00 pm	
Cannabidiol (CBD)	2.04	0.200	% by Weight	HPLC	11/20/19 11:00 pm	
Cannabigerol (CBG)	0.128	0.0200	% by Weight	HPLC	11/20/19 11:00 pm	
Cannabidiolic Acid (CBDA)	<0.00200	0.00200	% by Weight	HPLC	11/20/19 11:00 pm	
Cannabinol (CBN)	0.00224	0.00200	% by Weight	HPLC	11/20/19 11:00 pm	
Delta-9-Tetrahydrocannabinol (d9-THC)	0.0297	0.00200	% by Weight	HPLC	11/20/19 11:00 pm	
Cannabichromene (CBC)	0.0609	0.00200	% by Weight	HPLC	11/20/19 11:00 pm	
THCA-A	<0.00200	0.00200	% by Weight	HPLC	11/20/19 11:00 pm	

Sample Narrative: 1904897-01 500 mg Tincture (A)

Using the density of MCT oil (0.94 g/mL) to calculate Total CBD,

Total CBD = 575 mg per 30 mL container.

Bach Pham - Client Manager II

The results in this report apply to the samples analyzed in accordance with the chain of custody document. This analytical report must be reproduced in its entirety. All samples will be retained by Legend Technical Services, Inc. unless consumed in the analysis, for 30 days from the date of this report and then discarded unless other arrangements are made. ISO/IEC 17025:2005 Accredited, A2LA Certificate 2950.01.

Certificate of Analysis

Notes and Definitions

CFU/g	Colony Forming Units per Gram
HPLC	High-Performance Liquid Chromatography
MS	Mass Spectrometry
<	Less than value listed
RL	Reporting Limit
NA	Not Applicable