

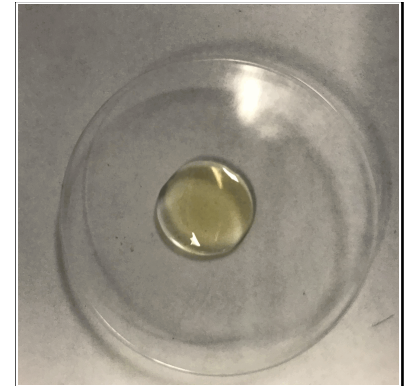
Certificate of Analysis

Client Name:	Cultivated CBD	Matrix:	Oil
Client Address:	22 N 5th St., Minneapolis, MN 55403	Date Received:	3/18/2021 11:35:00AM
Sample ID:	Blue Dream 0.5mL 300mg	Lab Sample ID:	2101288-03
Lot/Batch #:		Date of Report:	4/1/2021 9:26:31AM

Analysis	Requested (Yes/No)
Cannabinoid Profile	Yes
Terpene Profile	No
Afatiotoxins	No
Heavy Metals	No
Residual Solvents	No
Microbial Testing	No
Pesticides	No



Sample, packaged



Sample, actual

Cannabinoid Profile **2101288-03** **Blue Dream 0.5mL 300mg**

Analyte	Result	RL	Units	Analysis Method	Date Analyzed	Notes
Cannabichromene (CBC)	0.323	0.0371	% by Weight wei	HPLC	3/22/21 5:48 pm	
Cannabidiol (CBD)	61.0	3.71	% by Weight wei	HPLC	3/22/21 6:03 pm	
Cannabidiolic Acid (CBDA)	<0.0371	0.0371	% by Weight wei	HPLC	3/22/21 5:48 pm	
Cannabigerol (CBG)	0.0700	0.0371	% by Weight wei	HPLC	3/22/21 5:48 pm	
Cannabigerolic Acid (CBGA)	<0.0371	0.0371	% by Weight wei	HPLC	3/22/21 5:48 pm	
Cannabinol (CBN)	<0.0371	0.0371	% by Weight wei	HPLC	3/22/21 5:48 pm	
Delta-9-Tetrahydrocannabinol (d9-THC)	0.254	0.0371	% by Weight wei	HPLC	3/22/21 5:48 pm	
THCA-A	<0.0371	0.0371	% by Weight wei	HPLC	3/22/21 5:48 pm	
Total CBG	0.0700	0.0696	% by Weight wei	HPLC	3/22/21 5:48 pm	
Total CBD	61.0	3.74	% by Weight wei	HPLC	3/22/21 6:03 pm	
Total THC	0.254	0.0696	% by Weight wei	HPLC	3/22/21 5:48 pm	

Sample Narrative : **2101288-03** **Blue Dream 0.5mL 300mg**

Based on the density of CBD (1.03 g/mL),
 311 mg CBD per 0.5 mL cartridge

This is a revised report. This report was revised on April 1, 2021 to update the sample, packaged photograph. This report supercedes the report dated March 23, 2021.

Sarah Smestad - Chemist II/Client Manager I

The results in this report apply to the samples analyzed in accordance with the chain of custody documents. This analytical report must be reproduced in its entirety. All samples will be retained by Legend Technical Services Inc. unless consumed in the analysis, for 30 days from the date of this report and then discarded unless other arrangements are made. ISO/IEC 17025:2017 Accredited A2LA Certificate 2950.01.

Certificate of Analysis

Notes and Definitons

CFU/g	Colony Forming Unitis per Gram
HPLC	High-Performance Liquid Chromatiography
MS	Mass Spectirometry
<	Less tihan value listied
RL	Reporting Limiti
NA	Noti Applicable