

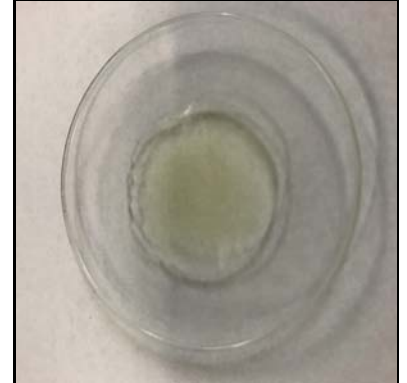
## Certificate of Analysis

<b>Client Name:</b> Cultivated CBD	<b>Matrix:</b> Tincture
<b>Client Address:</b> 22 N 5th St., Minneapolis, MN 55403	<b>Date Received:</b> 11/3/2020 11:40:00AM
<b>Sample ID:</b> 1000 mg Cherry Hill Tincture	<b>Lab Sample ID:</b> 2004494-04
<b>Lot/Batch #:</b>	<b>Date of Report:</b> 11/6/2020 5:17:47PM

Analysis	Requested (Yes/No)
Cannabinoid Profile	Yes
Terpene Profile	Yes
Aflatoxins	No
Heavy Metals	No
Residual Solvents	No
Microbial Testing	No
Pesticides	No



Sample, packaged



Sample, actual

**Cannabinoid Profile**      **2004494-04**      **1000 mg Cherry Hill Tincture**

Analyte	Result	RL	Units	Analysis Method	Date Analyzed	Notes
Cannabichromene (CBC)	0.148	0.00200	% by Weight	HPLC	11/5/20 11:28 pm	
Cannabidiol (CBD)	4.57	0.100	% by Weight	HPLC	11/5/20 11:41 pm	
Cannabidiolic Acid (CBDA)	0.00612	0.00200	% by Weight	HPLC	11/5/20 11:28 pm	
Cannabigerol (CBG)	0.0321	0.00200	% by Weight	HPLC	11/5/20 11:28 pm	
Cannabigerolic Acid (CBGA)	<0.00200	0.00200	% by Weight	HPLC	11/5/20 11:28 pm	
Cannabinol (CBN)	0.00528	0.00200	% by Weight	HPLC	11/5/20 11:28 pm	
Delta-9-Tetrahydrocannabinol (d9-THC)	0.107	0.00200	% by Weight	HPLC	11/5/20 11:28 pm	
THCA-A	<0.00200	0.00200	% by Weight	HPLC	11/5/20 11:28 pm	
Total CBG	0.0321	0.00376	% by Weight	HPLC	11/5/20 11:28 pm	
Total CBD	4.58	0.102	% by Weight	HPLC	11/5/20 11:41 pm	
Total THC	0.107	0.00375	% by Weight	HPLC	11/5/20 11:28 pm	

Sarah Smestad - Chemist II/Client Manager I

The results in this report apply to the samples analyzed in accordance with the chain of custody document. This analytical report must be reproduced in its entirety. All samples will be retained by Legend Technical Services, Inc. unless consumed in the analysis, for 30 days from the date of this report and then discarded unless other arrangements are made. ISO/IEC 17025:2017 Accredited, A2LA Certificate 2950.01.

**Certificate of Analysis**

**Terpene Profile                      2004494-04RE1                      1000 mg Cherry Hill Tincture**

Analyte	Result	RL	Units	Analysis Method	Date Analyzed	Notes
(-)-Alpha-Bisabolol	0.0086	0.0040	% by Weight	EPA 8270E	11/5/20 4:26 pm	
(R)-(+)-Limonene	0.031	0.0040	% by Weight	EPA 8270E	11/5/20 4:26 pm	
alpha-Humulene	0.021	0.0040	% by Weight	EPA 8270E	11/5/20 4:26 pm	
alpha-Pinene	<0.0040	0.0040	% by Weight	EPA 8270E	11/5/20 4:26 pm	
beta-Myrcene	<0.0040	0.0040	% by Weight	EPA 8270E	11/5/20 4:26 pm	
Geraniol	<0.0040	0.0040	% by Weight	EPA 8270E	11/5/20 4:26 pm	
Linalool	<0.0040	0.0040	% by Weight	EPA 8270E	11/5/20 4:26 pm	
Terpinolene	<0.0040	0.0040	% by Weight	EPA 8270E	11/5/20 4:26 pm	
trans-Caryophyllene	0.15	0.0040	% by Weight	EPA 8270E	11/5/20 4:26 pm	
(-)-beta-Pinene	<0.0040	0.0040	% by Weight	EPA 8270E	11/5/20 4:26 pm	
(-)-Guaiol	0.0058	0.0040	% by Weight	EPA 8270E	11/5/20 4:26 pm	
(-)-Isopulegol	<0.0040	0.0040	% by Weight	EPA 8270E	11/5/20 4:26 pm	
Camphene	<0.0040	0.0040	% by Weight	EPA 8270E	11/5/20 4:26 pm	
delta-3-carene	<0.010	0.010	% by Weight	EPA 8270E	11/5/20 4:26 pm	
alpha-Terpinene	<0.020	0.020	% by Weight	EPA 8270E	11/5/20 4:26 pm	
p-Isopropyltoluene (p-Cymene)	<0.010	0.010	% by Weight	EPA 8270E	11/5/20 4:26 pm	
Ocimene	<0.0040	0.0040	% by Weight	EPA 8270E	11/5/20 4:26 pm	
gamma-Terpinene	<0.0040	0.0040	% by Weight	EPA 8270E	11/5/20 4:26 pm	
Nerolidol	0.19	0.0040	% by Weight	EPA 8270E	11/5/20 4:26 pm	

**Sample Narrative:                      2004494-04                      1000 mg Cherry Hill Tincture**

Based on the density of avocado oil (0.92 g/mL),  
1260 mg CBD per 30 mL bottle

## Certificate of Analysis

### Notes and Definitions

CFU/g	Colony Forming Units per Gram
HPLC	High-Performance Liquid Chromatography
MS	Mass Spectrometry
<	Less than value listed
RL	Reporting Limit
NA	Not Applicable